

# Light Brown Apple Moth *Epiphyas postvittana* (Tortricidae)

Be on the lookout for this significant pest of plants, crops, and trees.

The light brown apple moth is a harmful, invasive pest that is native to Australia.

## Description

In the adult stage, light brown apple moths are approximately 8 to 10 mm long, just over half the size of a dime.



Figure 1: Adult female. Female light brown apple moths are tan with irregular, dark brown markings on their wings. They are 1/4-inch long, with a wingspan of 7 to 13 mm.

While adult coloring is variable, the moths are generally a pale yellowish-brown with darker brown markings on their forewings. Light brown apple moth eggs are pale white and slightly overlap one another. Typically, the eggs are deposited in groups of 20 to



Figure 2: Adult male. Adult males are tan and typically have more dark brown coloring on their wings. Males are smaller than females, with a wingspan of 6 to 10 mm.

50, but may also be found in groups of 2 to 170. Larvae are green; pupae are brown.

For more information, please visit the U.S. Department of Agriculture's (USDA) light brown apple moth Web

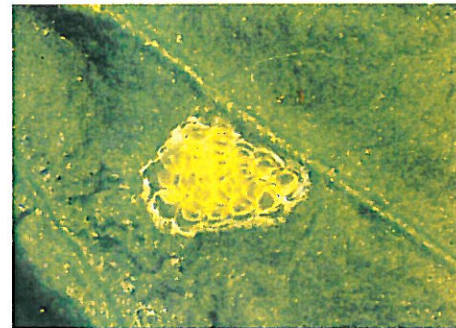


Figure 3: Egg mass. Females lay eggs on the upper surface of host leaves and occasionally on fruit and young stems. Each egg mass typically contains 20 to 50 eggs, but may contain from 2 to 170 eggs.

page at [www.aphis.usda.gov/plant\\_health/plant\\_pest\\_info/lba\\_moth/index.shtml](http://www.aphis.usda.gov/plant_health/plant_pest_info/lba_moth/index.shtml). To report any suspected findings of this pest, please contact your State department of agriculture or go to [www.aphis.usda.gov/services/report\\_pest\\_disease/report\\_pest\\_disease.shtml](http://www.aphis.usda.gov/services/report_pest_disease/report_pest_disease.shtml).



Figure 4: Larva. The light brown apple moth is a leaf roller moth, and its larvae are present, typically on the leaves of their host plants, for most of the year. Just-hatched larvae are 1.5 to 2 mm long and pale greenish-yellow with a dark brown head. Mature larvae are 10 to 18 mm long. They become medium green, with a light brownish-yellow head, a darker green central stripe, and in some cases, two side stripes running lengthwise on their bodies. Larvae have intermittent white hairs protruding from their bodies and a comb-shaped piece with 7 teeth at their tail end.



Figure 5: Pupa. Pupae turn from green to reddish-brown as they mature, reaching a length of 10 to 15 mm. A single pupa can often be found inside a thin, silken cocoon—between a webbing of two leaves pulled together.

The U.S. Department of Agriculture is an equal opportunity provider and employer.

**Photo credits:** All photos were either taken by USDA employees or are part of the APHIS photo collection.

**United States Department of Agriculture**  
Animal and Plant Health Inspection Service

Program Aid No. 1995  
Issued February 2009



INSECTS