

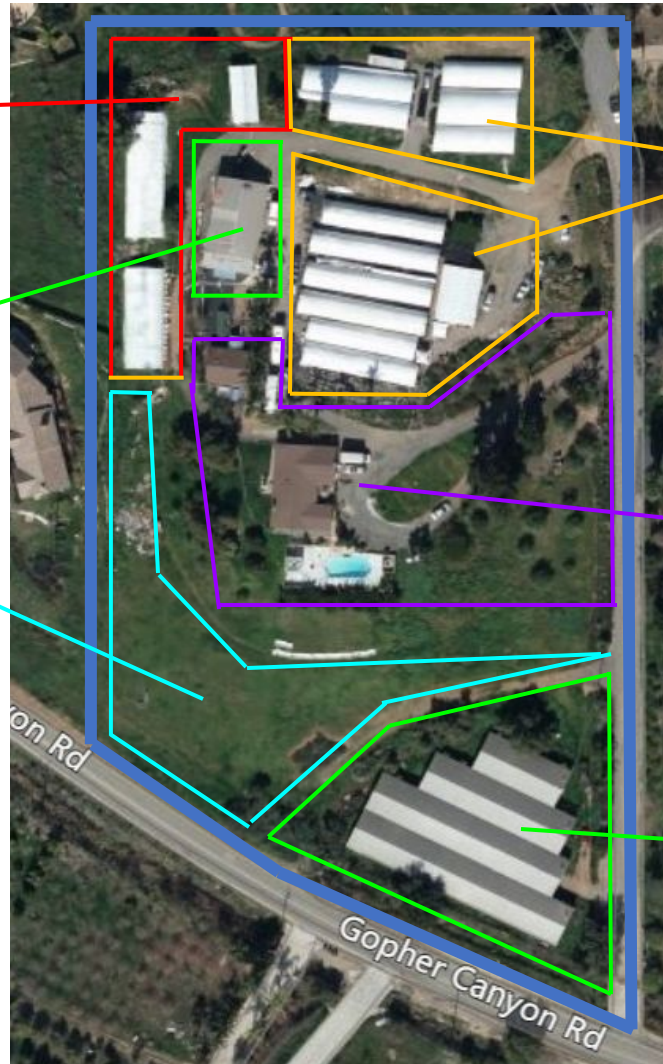
# ★ FARM/GREENHOUSE OPPORTUNITY IN VISTA, CA ★

FIRST TIME AVAILABLE IN THIS RARE LOCATION FOR YEARS

**Tenant B: NOT AVAILABLE**  
7300 sqft, water, electricity, access road

★ **Tenant A: AVAILABLE OCT 2022**  
2000 sqft Packing Shed, electricity, water, propane, bathroom, roll-up doors

★ **Tenant E: AVAILABLE IMMEDIATELY**  
Approx. 1.5 Acres open area for farm/crop



**Tenant C: NOT AVAILABLE**  
20,000 sqft  
Water, Electricity, Packing, storage area, access road

**Tenant D: NOT AVAILABLE**  
1700 sqft  
Residence + 800 sqft Detached Garage, separate gate and driveway

★ **Tenant A: AVAILABLE OCT 2022**  
18000 sqft greenhouse, water, electricity, propane, parking, access road, storage

Blue = Property Lines

- Easy Access from 15 and 76 Freeways
- Quiet Area & Side Street for Operations
- Access Roads for Tenants
- Great Climate

**IF INTERESTED CALL MELINDA (760) 213-1013**